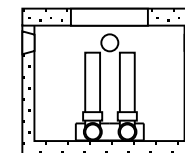
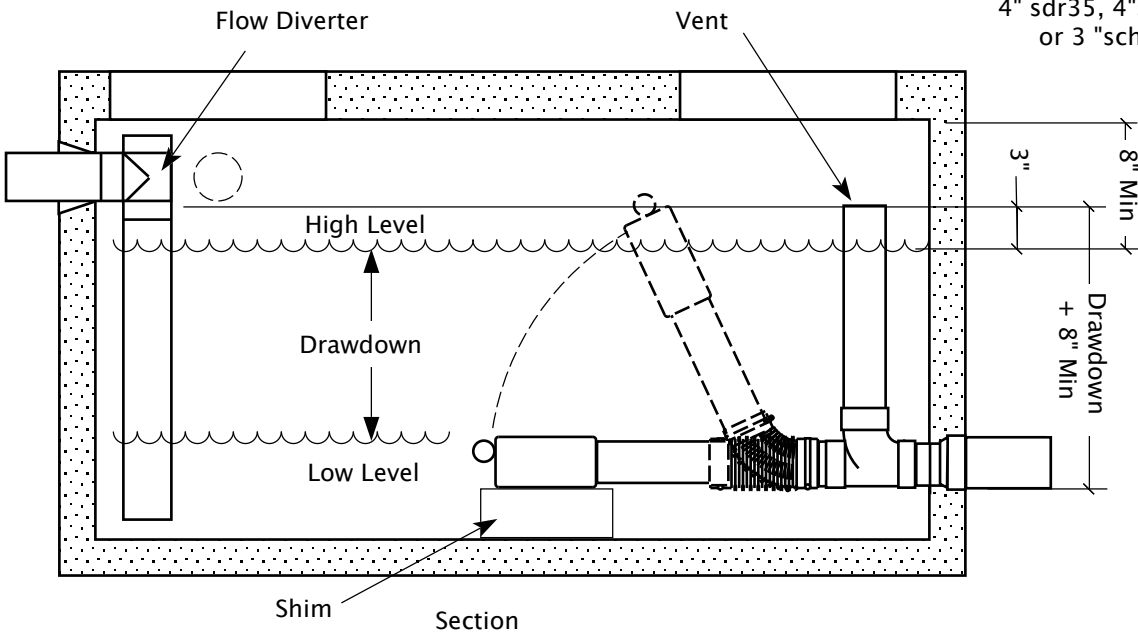


Outlet Fittings(2)
 3"sch40 to:
 4" sdr35, 4"sch40,
 or 3"sch40



End View
 (not to scale)

MULTI FLOUT® Arrangement with two 3" outlets. Type FL-xx32 Flout® (xx= drawdown in inches)

Notes:

*Dimensions are required minimums. All dimensions originate from inside of chamber. All dimensions in inches.

* MINIMUM DRAWDOWN available for this arrangement: 6"

*MAXIMUM DRAWDOWN available for this arrangement: 55"

*SHIM: Flout devices shall not drop lower than the outlet . Excessive drop will result in slow or no shut-off of flow. Install a shim to support Flout if floor is lower than outlets. Shims may be made of masonry or other suitable material. Plastic shim arrangements are available. Shims shall support Flout completely and be non-perforated to provide a water cushion. Consult Rissy for shim options.

*FLOW DIVERTER: Inlet flow shall not enter or interfere with the Flout. Divert inlet flow with a tee, elbow, or similar baffle to a level equal to or slightly below low liquid level.

* Flow rates and capacities depend on size of tank and drawdown used. This diagram is for a TYPICAL system.

Rissy Plastics, LLC
 350 Cedar Lane
 #10790
 860.482.1645
 877.221.4426
 fax 860.482.8800
 www.flout.net larvris@aol.com



MULTIPLE OUTLET FLOUT®
 DOSING CHAMBER (TYPICAL)

Date: 3/26/2010

Dwg No: fltyp_flox32

Scale: 3/4" = 12"

Flout® US Patent 5290434 CueBox™ US Patent Pending

